



INFORMATION FOR RECOGNITION OF DISEASE-FREE STATUS FOR CATEGORY C DISEASES OF AQUATIC ANIMALS IN ACCORDANCE WITH CHAPTER 4 OF PART II OF [REGULATION \(EU\) 2020/689](#) AND ARTICLE 11 OF COMMISSION IMPLEMENTING [REGULATION \(EU\) 2020/2002](#)

Requirements and information	Information, explanation and justification
Identification of the programme	
1. Date of submission	29 November 2021
2. Name of Member State and details of contact point	Denmark Danish Veterinary and Food Administration (DVFA), Stationsparken 31-33, 2600 Glostrup. Phone: +45 72276900. E-mail: 14@fvst.dk
3. Name of Category C disease	IHN – Infectious Haematopoietic Necrosis
4. Identification of the grounds for recognition of disease-free status	Continued IHN free status of a historically free compartment under surveillance conducted in accordance with Annex VI, part II. (d) Completion of an eradication programme
5. Territorial scope of the eradication programme	(b) Compartment <u>Address:</u> Kærhusvej 11 Hoven 6880 Tarm Denmark CHR: 103623 <u>Coordinates:</u> Latitude: 55.84 Longitude: 8.79

	<p><u>Farm details:</u> Farm production: Brood stock Water supply: Stream Discharge of effluents: Stream</p> <p><u>Farm productivity:</u> Brood stock: 10,000 (kg/y) For human consumption: 25,000 (kg/y) Nursery: 15,000 (kg/y)</p> <p><u>Description of compartment:</u> The compartment consists of three buildings and 28 outdoor ponds. Two buildings includes a hatchery, nursery and incubation and the second building is a storage building for feed. The dead fish tank is located outside the premises of the compartment.</p>
<p>6. Dependency of compartments</p>	
<p>(b) Dependent compartments as referred to in point (b) of Article 73(2) of Regulation (EU) 2020/689</p>	
<p>(i) the assessment referred to in point (a) of Article 73(3) of the same Regulation</p>	<p>The farm is dependent on surrounding water areas, as it takes in stream water, and therefore is dependent on other fish farms health status in the water catchment area.</p> <p>The other aquaculture establishments in the water catchment area are either classified as being free of IHN (27 fish farms and 4 put & Take lakes), or lack of health status because they never have been tested (16 put & take lakes). Until now, all these fish farms have only purchased fish with the same health status as Haarkjær fish farm regarding IHN (i.e.; fish only have been purchased from IHN-free establishments).</p> <p>Haarkjær fish farm is located 350 m upstream from Haarkjær-Birkholt creek to Simmel creek. From Simmel creek, the water flows into Hoven stream and further into Skjern stream. There are no other aquaculture establishments upstream of the fish farm. The nearest fish farm downstream is 3.5 km of Hoven stream.</p>

	<p>Haarkjær fish farm is located by a damming in Haarkjær-Birkholt creek. The damming is 0.75 m high.</p> <p>This damming prevents aquaculture animals from migrating to Haarkjær from the rest of the water catchment area</p> <p>Due to the damming neither virus-infected water nor infected fish can reach Haarkjær fish farm if infection should occur in the water catchment area.</p> <p>Based on this the production volume for other aquaculture establishments is not relevant for the assessment.</p> <p>It is estimated that the occurrence of susceptible species in Haarkjær - Birkholt creek is extremely low, as the water has a very low pH: 5- 5.5 value and low lime content. The owner states that the Danish National Institute of Aquatic Resources has made several studies of the water and it has shown that there are no fish, no seaweed fleas or other small aquatic animals. Migrant species are thus not considered to have an impact on opportunity for infection to Haarkjær Fish farm.</p> <p>Introduction of infection to the farm is also prevented by the presence of grids at the inlet to the farm.</p>
<p>(ii) details of any measures which were imposed by the competent authority to prevent the introduction of the relevant disease to the compartment</p>	<p>This IHN-free compartment must be classified as a high-risk establishment. The compartment is approved on the condition there is a damming near the fish farm and the grids at the inlet are continuously maintained.</p>

7. Statement

Statement confirming that the relevant general criteria in accordance with point (a) of Article 73(1) of that Regulation for aquatic compartments, are complied with since 1 April 2016 or longer

- (i) The territorial scope complies with point (c) of Article 47(2) of Regulation (EU) 2020/689;
- (ii) The surveillance for the disease complies with the requirements laid down in Articles 3(2), 4 and 6 to 9 of Regulation (EU) 2020/689; Until 21 April 2021 Denmark had Danish legislation based on the Implementing decision (EU) 2015/1554 (referring to Council Directive 2006/88/EC), and respectively Regulation 2017/625 and Regulation 2004/854. Furthermore, Denmark has an executive order no. 1324 of 26/11/2015, replaced by executive order no. 1451 of 12/12/2019 according to Council Directive 2006/88/EC.
- (iii) Operators comply with obligations as regards biosecurity measures as laid down in Article 10 of Regulation (EU) 2016/429; and Danish executive order no. 965 of 18/07/2013.
- (iv) Operators comply with the disease control measures relevant to the disease in the event of a suspicion or confirmation; Delegated Regulation 2020/689 and Danish executive order no. 1324 of 26/11/2015, replaced by executive order no. 1451 of 12/12/2019 according to Council Directive 2006/88/EC.
- (v) The establishment of which the compartment is comprised of was approved for brood stock in 2015; The establishment was approved according to Danish executive order no. 965 of 18/07/2013.

	<p>(vi) Traceability of the animals from the targeted animal population is ensured;</p> <p>(vii) When moved, the animals from the targeted animal population or products thereof complied with the animal health requirements for movement within the Union or for entry into the Union of those animals and products thereof, and Danish executive order no. 965 of 18/07/2013.</p>
--	--

11. When the grounds for recognition of disease-free status is based on the completion of an eradication programme, for each year of the programme, information must be supplied concerning:

(a) the aquaculture establishments and where relevant, the sampling points in the wild in the zone/compartiment:

<p>(i) Number of approved aquaculture establishments in the programme</p>	<p>There is one approved aquaculture establishment in the compartment.</p>
<p>(ii) Maps showing approved and registered aquaculture establishments, and where relevant, sampling points in the wild</p>	<p>See map of compartment.</p>
<p>(iii) Number of aquaculture establishments, and where relevant, sampling points in the wild, out of the total number of aquaculture establishments and sampling points in the wild, which are not infected</p>	<p>One out of one aquaculture establishment in the compartment is not infected.</p>
<p>(iv) Number of aquaculture establishments, and where relevant, sampling points in the wild, out of the total number of aquaculture establishments and sampling points in the wild, with confirmed cases</p>	<p>The establishment has no confirmed cases.</p>

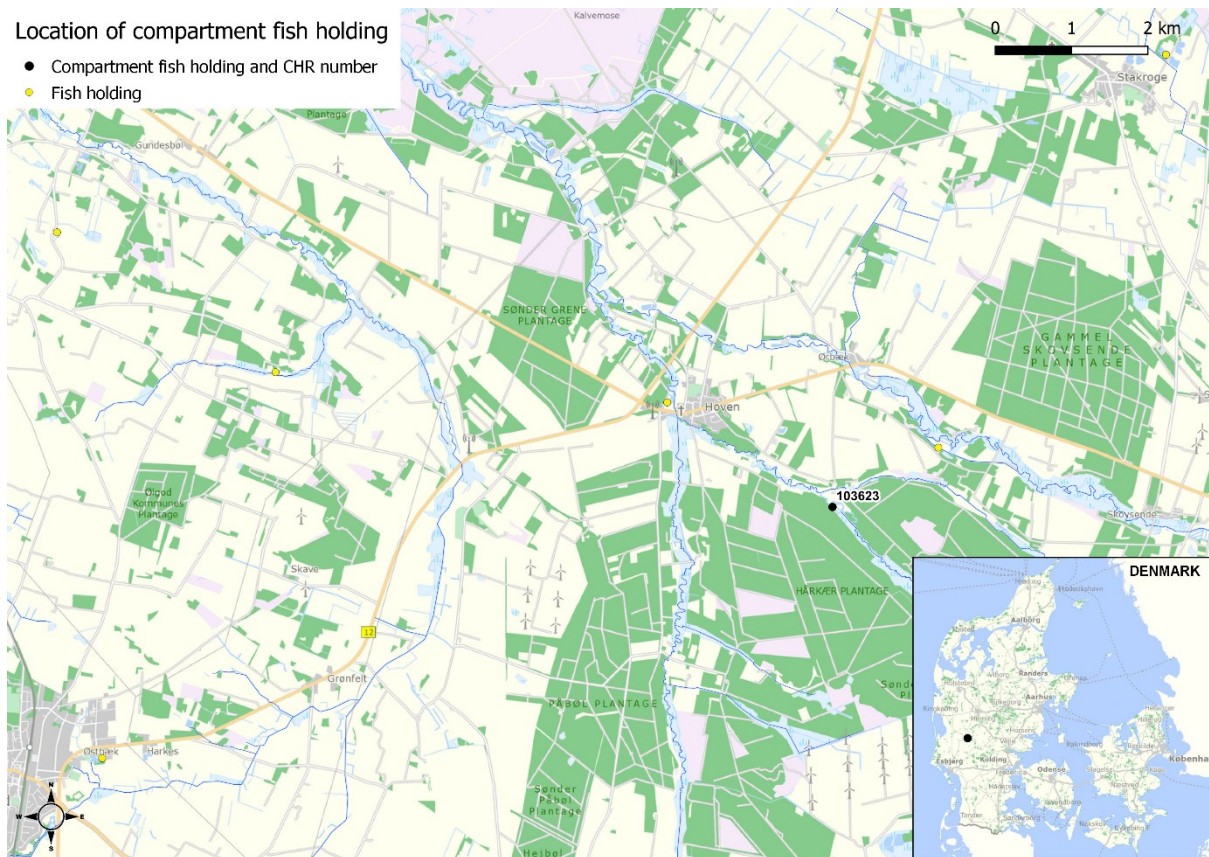
<p>(v) Number of new aquaculture establishments, and where relevant, sampling points in the wild, out of the total number of aquaculture establishments and sampling points in the wild, with confirmed cases</p>	<p>There are no new aquaculture establishments in the compartment with confirmed cases.</p>
<p>(b) animal health visits and sampling which have been completed</p>	
<p>(i) Number of health visits per approved and where relevant, per registered aquaculture establishment</p>	<p>See table. Since 21 April 2021, the establishment has been subject to health visits according to Delegated Regulation 2020/689, annex VI, part II, Chapter 1, section 4 and 5. Until 21 April 2021, the establishment has been subject to health visits and sampling according to executive order no. 1324 of 26/11/2015, replaced by executive order no. 1451 of 12/12/2019 (according to Council directive 2006/88/EC).</p>
<p>(ii) Number of samplings per approved, and where relevant, per registered aquaculture establishment, or samplings in wild populations</p>	
<p>(iii) Number of animals sampled at each sampling event</p>	
<p>(iv) Species sampled</p>	
<p>(v) Results from each laboratory examination (positive/ negative for the pathogen in question)</p>	
<p>(vi) Results from each clinical inspection</p>	
<p>(vii) Water temperature at the time of sampling</p>	

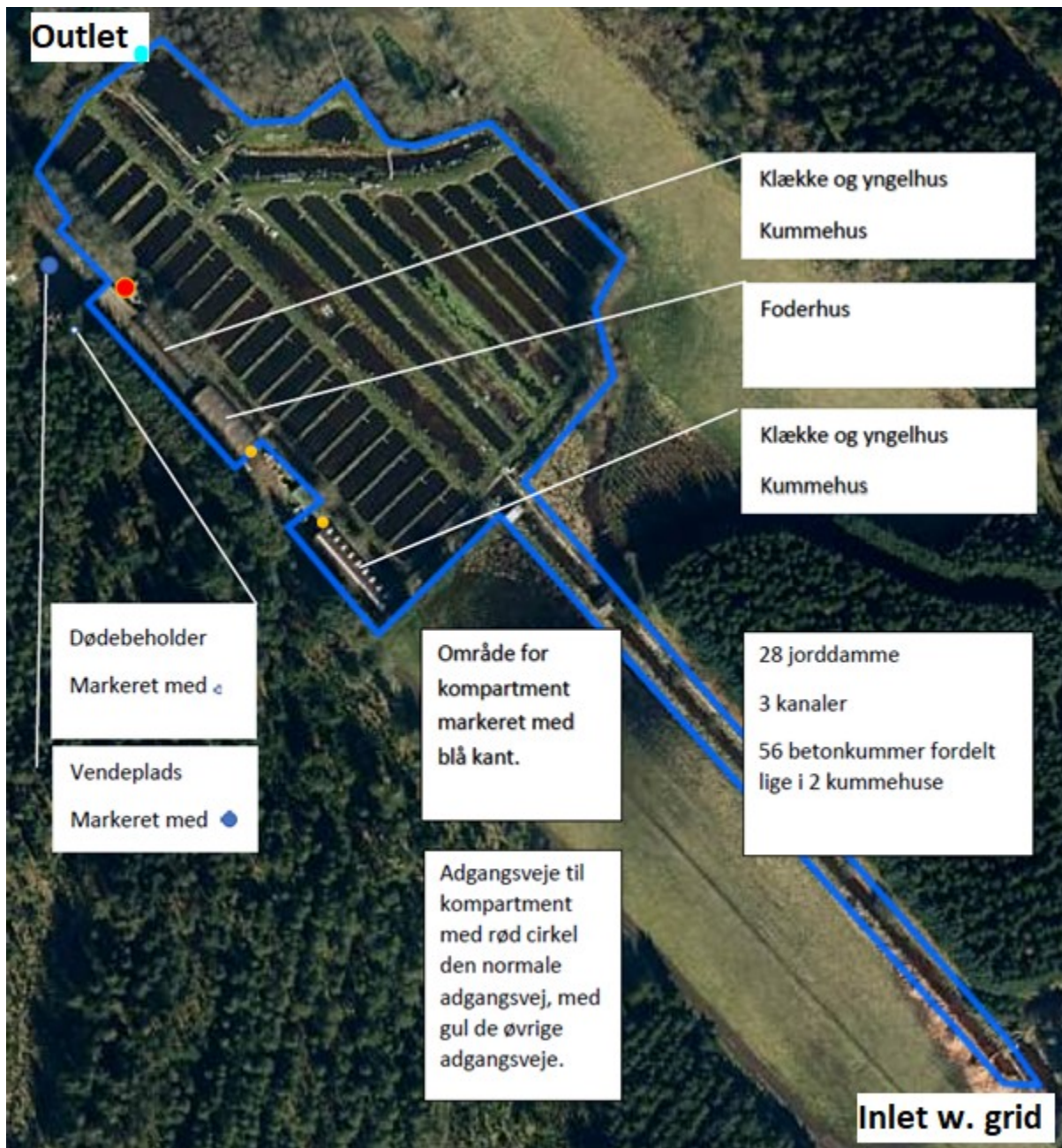
Table of animal health visits and sampling completed since 1 April 2016

Health visits	Samplings	Animals tested per sampling	Species sampled	Result of laboratory analysis	Result of clinical inspection	Water temperature at sampling
1*	1*	30	Rainbow and brown trout	Negative	No clinical signs of IHN	14 °C or below

* Per year, at least.

Map of compartment and location in Denmark:





Dødebeholder: Dead fish tank

Vendeplads: turning space

Klække og yngelhus, kummehus: Hatchery and nursery, incubation house

Foderhus: Storage house for feed

Område for kompartiment markeret med blå kant: Compartment area inside the blue marking

Adgangsveje til kompartiment med rød cirkel den normale adgangsvej, med gul de øvrige adgangsveje: Access roads to the compartment; red circle is the usual road, yellow circles are additional roads.

28 jorddamme: 28 ponds

3 kanaler: 3 channels

56 betonkummer fordelt lige i 2 kummehuse: 56 basins equally distributed in the 2 hatchery buildings